

Theatre Passe Muraille

16 RYERSON AVE TORONTO, ONTARIO M5T 2P3 P 416.504.7529 F 416.504.8980 E INFO@PASSEMURAILLE.ON.CA W PASSEMURAILLE.CA

Andy McKim ARTISTIC DIRECTOR | Régine Cadet GENERAL MANAGER

TPM

Address & Telephone

Mainspace and Backspace Theatres:

16 Ryerson Avenue
Toronto, Ontario
M5T 2P3

Phone: 416.504.7529
Fax 416.504.8980

Office: (just around the corner)

54 Wolseley St,
Toronto, Ontario
M5T 1A5

Phone: 416.504.8988
Fax: 416.504.8980

Rental Procedure

Please note that Theatre Passe Muraille works based on a full production design style, rather than Road House style.

This means that when you rent the space, you start with the lighting and masking in storage. It is expected that you / your designers will provide us with your lighting design / stage design in advance, and on the FIRST day of your rental dates, the lighting design / stage design will be installed.

To rent the space, please fill out the form at:

<http://passemuraille.ca/archives/rentals/mainspace>

Once the conversation about rental dates starts, we may send you a tech questionnaire to fill out and return before the rental can be confirmed.

Theatre Passe Muraille

16 RYERSON AVE TORONTO, ONTARIO M5T 2P3 P 416.504.7529 F 416.504.8980 E INFO@PASSEMURAILLE.ON.CA W PASSEMURAILLE.CA

Andy McKim ARTISTIC DIRECTOR | Régine Cadet GENERAL MANAGER

What your Rental Includes

The contract goes into great detail, but essentially your rental fee for each week *includes:*

- 40 hours of our house technician time,
- all FOH & Box Office staff and costs if you stay within TPM's regular mainstage performance schedule: Tues-Sat @ 7:30pm & a Saturday Matinee @ 2:00 p.m.
- Web, phone & in person sale of your tickets.

What is not included:

- Load in/Lighting Hang/Strike labour fees for the technicians beyond the house tech
- Insurance (we can provide you with forms to apply for 3rd party insurance through our insurer, or you can find another company)
- Any house technician time over the 40 hours per week.
- Any FOH / Box Office staffing charges for bringing in staff for performances outside of TPM's schedule.
- (Note: we do not have a house lighting plot already hung for rental use – this must be accommodated for in design and in hang/focus time by the rental company)

As mentioned above, it is important to note that your rental does not come with lights in the air ready to be focused. There are no stage lights plugged in or hung at the beginning of a rental and we hang the lights specific to each company's design plot. The common practice is for the rental company to hire a designer to prep, plan, and draft a lighting plot, which we will hire crew to hang on your behalf.

If you don't want to hire a designer, there are several plots than can be rented. Please contact us for information. NOTE: you still need to budget the time and money for the labour to hang and focus the plots and to build any cues needed. The director, or someone else will still need to decide the looks of each cue.

For Festival shows:

Please note that if you are involved in a festival (ie Fringe / Summerworks etc) you will likely often do not have access to the full equipment stock. Please go through your festival to find out what is included for your show.

Rentals Coordinators

Eric Read – Production & Facility Manager ext 2138
Jenn Sartor – Producer ext: 2127

Theatre Passe Muraille

16 RYERSON AVE TORONTO, ONTARIO M5T 2P3 P 416.504.7529 F 416.504.8980 E INFO@PASSEMURAILLE.ON.CA W PASSEMURAILLE.CA

Andy McKim ARTISTIC DIRECTOR | Régine Cadet GENERAL MANAGER

Backspace

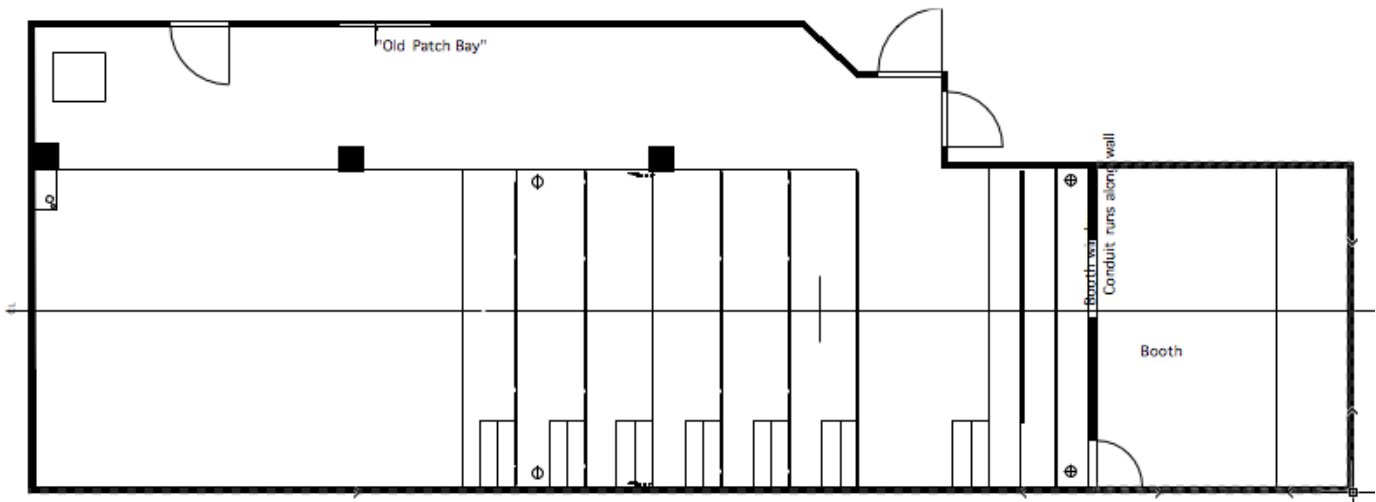
Capacity

The majority of the seating is on bench risers with upholstered backs.

55 Persons – with nonfixed seating in the accessible seating area

53 Persons– with a mobility device in the accessible seating.

Deck



Dimensions

Depth – 19'2"

Width – 14'8" (14'4" between pillars)

Stage Lip back of house – (Horizontal measurement) 26'

Deck Height – 1'5"

Clearance under Balcony/Mezzanine SL – Varies. 5'9" to 5'11" at stage edge. 7' in front aisle

Grid Height

SL/SR Pipes – 14'4"-14'6"

US/DS pipes – 14'3"-14'5"

NOTE: that while there are levels to step off the SL side of the stage, they are NOT standard steps, and are uneven.

Theatre Passe Muraille

16 RYERSON AVE TORONTO, ONTARIO M5T 2P3 P 416.504.7529 F 416.504.8980 E INFO@PASSEMURAILLE.ON.CA W PASSEMURAILLE.CA

Andy McKim ARTISTIC DIRECTOR | Régine Cadet GENERAL MANAGER

Related equipment

N/A

Masking (please confirm in advance)

4 – 8'x4' wide panel – Webbed and Grommetted top, pocketed bottom

1 – 10'10"hx6'6"w panel – webbed and grommetted top, pocketed bottom

1 – 23'x12'w panel – webbed & grommetted top, grommetted sides, pocketed bottom

(often used on its side to mask off the US portions of the balcony SL. While oversized, it can be used to create upstage drapery.

Shared Inventory Note:

With all shared inventory, please check for availability in advance. Note there may be an additional cost for shared inventory.

Lighting

Control System

ETC Element 60/500

Console Accessories

None

Circuits

New Style Twist home runs spread upstage to DS along the SL balcony.

Dimming

48 dimmer ETC Sensor rack @ 1.2K

1 dimmer reserved for House Lights

Aux / Tie in Power

None

Theatre Passe Muraille

16 RYERSON AVE TORONTO, ONTARIO M5T 2P3 P 416.504.7529 F 416.504.8980 E INFO@PASSEMURAILLE.ON.CA W PASSEMURAILLE.CA

Andy McKim ARTISTIC DIRECTOR | Régine Cadet GENERAL MANAGER

Instrument Inventory

Fixture Type	Current	Lensing	Degree options	In Stock	Notes
Source-4 ERS - 575W	HPL	Interchangable barrels	19, 26, 36, 50, 90 degrees	36	
19 Degree Barrels				4	
26 Degree Barrels				7	
36 Degree Barrels				21	
50 Degree Barrels				4	
Strand SL Zooms		GLC	23-50	12	
Strand 6" Fresnelite	BTR	Stepped	8-59 Degree	16	
Altman 6" Fresnel	BTL	Stepped	13-65 Degree	25	
PAR 64	FFS	Per Bulb	Per Bulb	12	
Altman Leko				4	
Colortran Mini Ellipse		Zoom		2	

SHARED Lighting Accessories – Check on availability

7.5" Barn Doors	
2" Snoot	42
1" Snoot	3
No Snoot	12
10" Barn Doors	
No Snoot	10

Source-4 Irises	8
-----------------	---

Top Hats

6.25"	9
-------	---

Automation / FX (Extra cost for use, Shared inventory, Check for availability and cost)

- 3 - Rosco I-Cue moving Mirror
- 4 - Seachanger Tungsten for Source 4
- 1 - Rosco DMX Iris
- 1 - Radiance Hazer

Theatre Passe Muraille

16 RYERSON AVE TORONTO, ONTARIO M5T 2P3 P 416.504.7529 F 416.504.8980 E INFO@PASSEMURAILLE.ON.CA W PASSEMURAILLE.CA

Andy McKim ARTISTIC DIRECTOR | Régine Cadet GENERAL MANAGER

Sound

Consoles

Soundcraft EPM12

Console Accessories

None

Routing

Motu 828 Mk3

Playback

Qlab3 (Check for availability and cost)

1/8" Jack for Laptop, MP3 player etc

Shared Sound Inventory

Mic Stands	-
Tripod Boom Stand	3
Bell Base Boom Stand	3
Straight Bell Base Stand	4
Short Table Mic Stand	1?

Microphones	
Shure SM57	4
Shure SM58	2
Shure C606	2
Shure RS25	3
Audix ADX40 Cardioid Hanging	3

Dis	
Zdirect Passive Mono	2
Radial Passive Mono	1
Art Passive Dual	1

Music Stands	-
Stageline Adjustable Tripod	2
Manhasset Set Tripod	4

Music Stand Lights	
Epic Non-Dimmable	4

Theatre Passe Muraille

16 RYERSON AVE TORONTO, ONTARIO M5T 2P3 P 416.504.7529 F 416.504.8980 E INFO@PASSEMURAILLE.ON.CA W PASSEMURAILLE.CA

Andy McKim ARTISTIC DIRECTOR | Régine Cadet GENERAL MANAGER

Speakers

2 x Yorkville Pulse TL12 (Our standard mains)
1 x Yorkville YSL Elite 12" 700W powered subwoofer

Amplifiers

Ashly MOS FET 1200w 2000M x2

Snake

none

Aux Equipment

Yamaha SPX 900 multi-effect processor

Communications and Projections

Intercom

Single channel use.
3 headsets and beltpacks.

Projector (Extra cost for use, shared inventory)

Panasonic PT-DZ530U
Epson ProG6150NL

1x 6'x8' pull down screen

Shop, Rehearsal & Loading

Cabaret stage

A bar and Cabaret space are potentially available for events during your run. Please see our website for details.

Shop

Shop space (no spray booth or spray painting) is available for a reasonable \$100/day rate + fasteners. If you wish to use your own carpenter, please contact us in advance. We reserve the right to insist upon the use of one of our carpenters. (\$22.45/hr base rate)

All carpenters must show proof of WSIB or be employed as TPM staff.

Please see our website or contact us for more details.

Theatre Passe Muraille

16 RYERSON AVE TORONTO, ONTARIO M5T 2P3 P 416.504.7529 F 416.504.8980 E INFO@PASSEMURAILLE.ON.CA W PASSEMURAILLE.CA

Andy McKim ARTISTIC DIRECTOR | Régine Cadet GENERAL MANAGER

Rehearsal

We do not have any rehearsal space. The theatre may be rented as a rehearsal hall.

Loading

Loading is through a double door off/upstage left. Loading is done into the SL wing. Note the SL wing is a fire exit.
