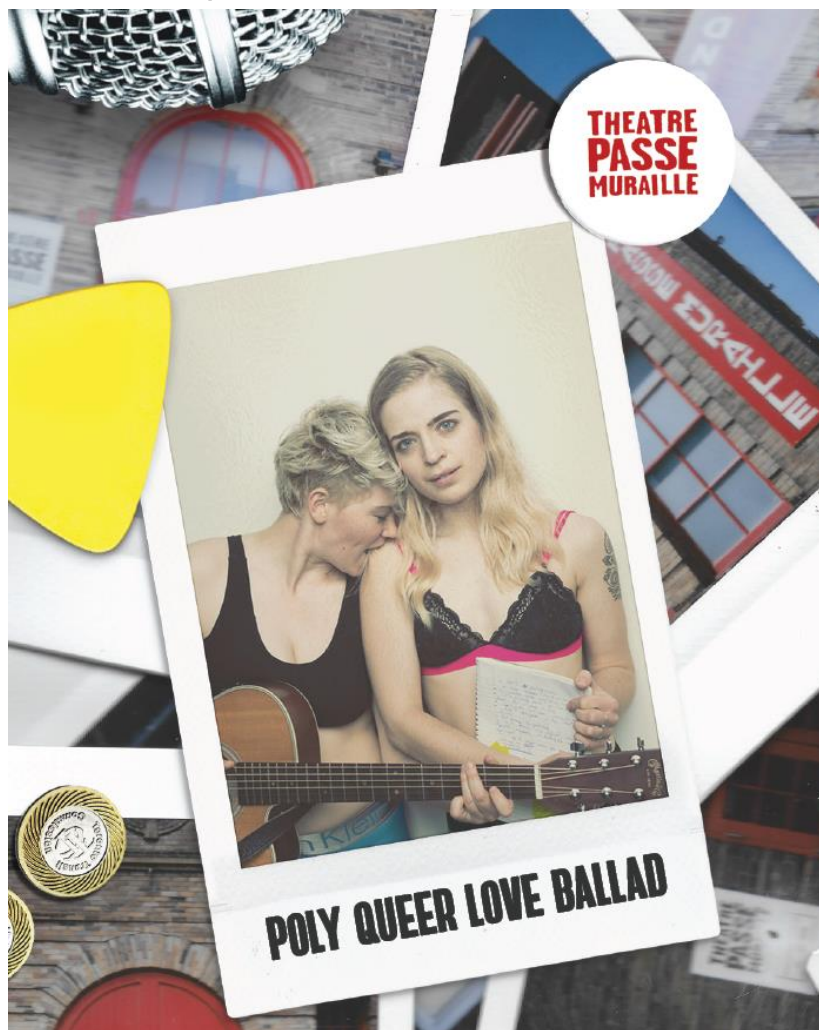


VISUAL STORY

Poly Queer Love Ballad



Relaxed Performance:
Sat. Nov. 30, 2019 at 2:00pm
Theatre Passe Muraille Backspace

Our Access Initiatives are made possible with the support of



THE
READY
COMMITMENT

TABLE OF CONTENTS

ABOUT THE SHOW 3

Performance Time 3

Pre-Show Talk..... 3

Calm Space..... 3

ABOUT THE STORY..... 4

Characters 4

Other show details 4

Things to look out for 5

THE END OF THE PLAY..... 5

People involved in the show 5

ABOUT THE SHOW

PERFORMANCE TIME

The performance will start at 2:00pm and is about 65 minutes long.

The show will finish around 3:10pm.

PRE-SHOW TALK

Marjorie will introduce herself, and let you know about any parts of the play we think you might want to know in advance.



Marjorie Chan

CHANGES TO THE SHOW

There will be some small changes to the lighting and sound to create a less intense environment.

The lights over the audience will remain on low throughout the performance so you can see if you need to leave the theatre.

CALM SPACE

If you need to leave the theatre at any time, there is a calm space in the lobby you can visit. You can go there to relax if you need a break before going back into the theatre.

If you ask a staff member, they will show you to this area.

ABOUT THE STORY

Nina is a poet who has relationships with many different people at the same time. Gabbie is a lesbian songwriter who only dates one person at a time.

When the two meet at an open mic night, they need to figure out how to be in a relationship with each other. They view relationships in different ways so they find this hard at times.

The show talks about queer romance and shows that relationships come in all different shapes and sizes.

The show is a non-traditional musical that blends slam poetry with catchy pop-folk tunes.

CHARACTERS

Each actor plays a lot of different characters so watch out for small costume changes which will help you understand who they are playing. The actors are also part of a chorus so they will be making sounds and singing during the transitions.

OTHER SHOW DETAILS

The play jumps from scene to scene and the scenes will happen in different areas around the theatre. The audience will be sitting on all sides of the theatre, so you may see other audience members across the stage.

THINGS TO LOOK OUT FOR



Please feel free to bring and put on your ear protection. There is music in the show which may get a little loud at times.

THE END OF THE PLAY

Some people might like the play, and some might not like it. It is all right to feel different emotions after the theatre performance.



At the end of the play, people will clap. It's your opportunity to show your appreciation of the play.

PEOPLE INVOLVED IN THE SHOW

Sammie Hatch is the **STAGE MANAGER**. You will see them in the booth at the back of the theatre.



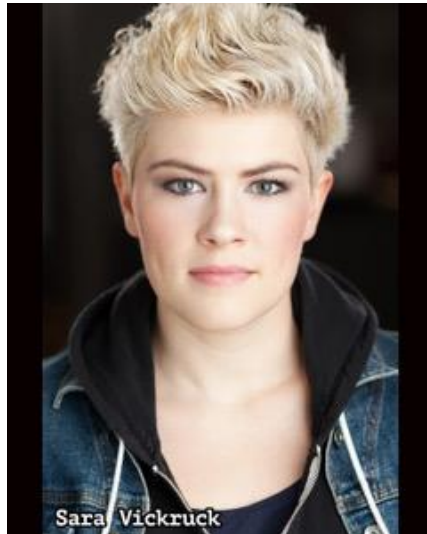
You might also see Christopher Ross, the **HOUSE TECHNICIAN** in the booth at the back of the theatre.



These are the **ACTORS** in the play.



Anais West



Sara Vickruck

There will also be a poet who will perform at the start of the show. This will be a different person every show, and they will sit in the audience after they perform.