

theatre passe muraille

backspace theatre tech package

Address & Telephone

Mainspace and Backspace Theatres:

16 Ryerson Avenue
Toronto, Ontario
M5T 2P3

Phone: 416-504-7529

Fax: 416-504-8980

Office:

555 Richmond St. W.
Suite 502
Toronto, Ontario
M5V 3B1

Phone: 416-504-8988

Fax: 416-504-8980

Rental Procedure

Please note that Theatre Passe Muraille works based on a full production design style, rather than Road House style.

This means that when you rent the space, you start with the lighting and masking in storage. It is expected that you / your designers will provide us with your lighting design / stage design in advance, and on the FIRST day of your rental dates, the lighting design / stage design will be installed.

To rent the space, please fill out the form at:

<https://www.passemuraille.ca/venue-rental/mainspace-theatre/>

Once the conversation about rental dates starts, we may send you a tech questionnaire to fill out and return before the rental can be confirmed.

What your Rental Includes

The contract goes into great detail, but essentially your rental fee for each week

includes:

- 40 hours of our house technician time,
- all FOH & Box Office staff and costs if you stay within TPM's regular mainstage performance schedule: Wed-Sat @ 7:30pm & a Saturday Matinee @ 2:00 p.m.
- Web, phone & in person sale of your tickets.

What is not included:

- Load in/Lighting Hang/Strike labour fees for the technicians beyond the house tech
- Insurance (we can provide you with forms to apply for 3rd party insurance through our insurer, or you can find another company)
- Any house technician time over the 40 hours per week.
- Any FOH / Box Office staffing charges for bringing in staff for performances outside of TPM's schedule.

***(NOTE:** we do not have a house lighting plot already hung for rental use – this must be accommodated for in design and in hang/focus time by the rental company)

As mentioned above, it is important to note that your rental does not come with lights in the air ready to be focused. There are no stage lights plugged in or hung at the beginning of a rental and we hang the lights specific to each company's design plot. The common practice is for the rental company to hire a designer to prep, plan, and draft a lighting plot, which we will hire crew to hang on your behalf.

If you don't want to hire a designer, there are several plots that can be rented. Please contact us for information.

***NOTE:** you still need to budget the time and money for the labour to hang and focus the plots and to build any cues needed. The director, or someone else, will still need to decide the looks of each cue.

For Festival shows:

Please note that if you are involved in a festival (ie Fringe / Summerworks etc) you will likely not have access to the full equipment stock. Please go through your festival administrators to find out what is included for your show.

Rental Coordinators

Eric Read – Production & Facility Manager ext. 2138

Jenn Sartor – Producer ext: 2127

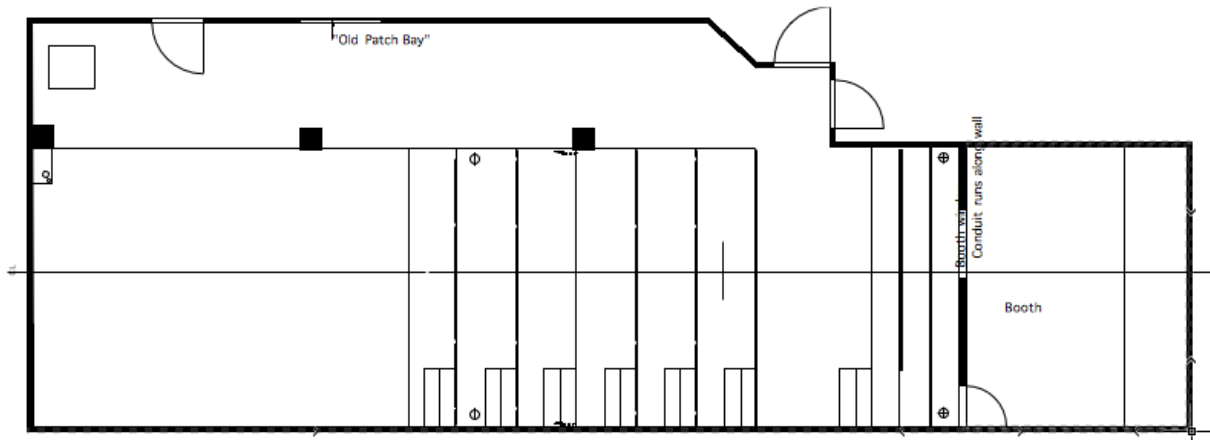
Backspace Capacities

The majority of the seating is on bench risers with upholstered backs.

55 Persons – with nonfixed seating in the accessible seating area

53 Persons– with a mobility device in the accessible seating.

Deck



Dimensions

Depth: 19'2"

Width: 14'8" (14'4" between pillars)

Stage Lip back of house: (Horizontal measurement) 26'

Deck Height: 1'5"

Clearance under Balcony/Mezzanine SL: Varies

- 5'9" to 5'11" at stage edge. 7' in front aisle

Grid Height:

- SL/SR Pipes – 14'4"-14'6"
- US/DS pipes – 14'3"-14'5"

NOTE: that while there are levels to step off the SL side of the stage, they are NOT standard steps, and are uneven.

Masking (please confirm in advance)

4 - 8'h x 4' wide panel | webbed and grommetted top, pocketed bottom

1 - 10'10"h x 6'6"w panel | webbed and grommetted top, pocketed bottom

1 - 23'h x 12'w panel | webbed & grommetted top, grommetted sides, pocketed bottom

- often used on its side to mask off the US portions of the balcony SL. While oversized, it can be used to create upstage drapery.

Shared Inventory Note:

With all shared inventory, please check for availability in advance.

NOTE: there may be an additional cost for shared inventory.

Lighting

Control System	Console Accessories	Circuits
ETC Element 60/500	None	New Style Twist home runs spread US to DS along the SL balcony.
Dimming	Aux / Tie in Power	
48 dimmer ETC Sensor rack @ 1.2K. 1 dimmer reserved for House Lights.	None available	

Instrument Inventory:

Fixture Type	Current	Lensing	Degree options	In Stock
Source-4 ERS - 575W	HPL	Interchangeable barrels	19, 26, 36, 50, 90 degrees	36
19 Degree Barrels				4
26 Degree Barrels				7
36 Degree Barrels				21
50 Degree Barrels				4
Strand SL Zooms		GLC	25.50	12
Strand 6" Fresnelite	BTR	Stepped	8-59 Degree	16
Altman 6" Fresnel	BTL	Stepped	13-65 Degree	25
PAR 64	FFS	Per Bulb	Per Bulb	12
Altman Leko				4
Colortran Mini Ellipse		Zoom		2

SHARED Lighting Accessories

Check on availability

7.5" Barn Doors	
2" Snoot	42
1" Snoot	3
No Snoot	12

Source-4 Irises	8
-----------------	---

10" Barn Doors	
No Snoot	10

Top Hats	
6.25"	9

Automation (Extra cost for use, Shared Inventory)

- 2 - Rosco I-Cue moving Mirror
- 4 - Seachanger Tungsten for Source 4
- 1 - Rosco DMX Iris
- 1 - Radiance Hazer

Sound

Consoles	Console Accessories	Routing
Behringer X32 Producer	None	On-board card in X32 via USB
Playback	Amplifiers	Snake
Qlab3 (Check for availability and cost) 1/8" Jack for Laptop, MP3 player etc	Ashly MOS FET 1200w 2000M x2	Behringer SD8 (Check availability)
Speakers	Aux Equipment	
2 x Yorkville NX750P (Our standard mains) 1 x Yorkville YSL Elite 12" 700W powered subwoofer	Yamaha SPX 900 multi-effect processor	

Shared Sound Inventory:

<u>Mic Stands</u>		<u>Music Stands</u>	
Tripod Boom Stand	3	Stageline Adjustable Tripod	2
Bell Base Boom Stand	3	Manhasset Set Tripod	4
Straight Bell Base Stand	4		
Short Table Mic Stand	1?	<u>Music Stand Lights</u>	
		Epic Non-Dimmable	4
<u>Microphones</u>			
Shure SM57	4	<u>Dis</u>	
Audix ADX40 Cardioid Hanging	3	Zdirect Passive Mono	2
Shure C606	2	Radial Passive Mono	1
Shure RS25	3	Art Passive Dual	1
Shure SM58	2		
		<u>Powered speakers</u>	
		Yorkville C170P	11

Communications

Intercom

- Single channel use.
- 3 headsets and beltpacks

Projections

Shared Projectors (Extra cost for use, shared inventory)

Panasonic PT-DZ530U

Epson ProG6150NL

1x 6'x8' pull down screen

Shop, Rehearsal & Loading

Cabaret stage

A bar and Cabaret space are available for events during your run. Please see our website for details.

Shop

We do not have any shop space. Some basic carpentry can be done onsite, but please confirm with TPM's Production Manager

Rehearsal

We do not have any rehearsal space. The theatre may be rented as a rehearsal hall.

Loading

Loading is through a double door off/upstage left. Loading is done into the SL wing. Note the SL wing is a fire exit.